

# The Messenger



December 2020

Tomas Griebing, President (tlginkc@yahoo.com)  
Michael Miklovic, 1st Vice President (stumper1972@aol.com)  
Rodger McReynolds, 2nd Vice President (rodger\_mcreynolds.hotmail.com)  
Armen Hovsepian, Treasurer (info@armenstamp.com)  
Michael Keil, Secretary (mkeil87859@hotmail.com)  
Jim McKinzie, Newsletter Editor (jimmckinzie1@att.net)

From your device or phone  
**December 5th meeting**  
**Virtual Meeting Starts 2:00**  
**Info will come to your email**

## **Our Secretary Reports What You Missed:**

**Members who Logged into our Zoom meeting: 19**

**Treasurer:** No activity to report. Armin reported that one person signed on for the test sessions he offered. More will be offered in the coming weeks. The schedule will be published in the newsletter.

**Membership:** No new members.

**Secretary:** The Southeastern Stamp Expo (Jan. 18-19, 2021) in Atlanta has been cancelled. Other shows have been scheduled for 2021. St. Louis Stamp Expo, March 19-21. Rocky Mountain Stamp Show, May 28-30. KNA Coin and Stamp show in Wichita, June 18-19. Great American Stamp Show, August 12-15, Rosemont, Ill. Omaha Stamp Show, September 11-12. Check the show web sites before you head out to a show.

**Librarian:** Two new titles have been added. Neal is working on an updated list and will get it to Roger to post on the club web site.

**Historian:** Nothing new to report.

**First Vice-President's Report:** Nothing new to report.

**Second Vice-President's Report:** Nothing new to report.

**Newsletter:** The deadline for submissions is the 15<sup>th</sup> of the month. This is a "hard" deadline, so get your items to Jim on or before this date. Jim appreciates all the submissions for the newsletter this year.

**Exhibits:** Nothing to report.

**Old business:** Bob Baltzell reminded the club that all current officers have agreed to serve for another year. Elections will be held in December and nominations from the floor will be accepted at that time.

**New Business:**

**Announcements:** Tomas will check into getting our monthly Zoom meetings listed on the APS web site.

Bernstein's (Main Street Philatelics) in Branson has closed but is still doing business online.

**Show and Tell:** Neal had a question about a "precanceled" postcard in a sealed cellophane wrapper. The Post Office issues a permit for this. Armin compared the price of stamps from the U. S., Great Britain, and Iran to show the impact of inflation. Bill Gourley shared some German inflation stamps from the 1920s-30s and talked about the how stamps can show inflation can have serious political and social implications. A discussion of inflation and its impact in Iran followed.

**Program:** Dale Smith presented an extremely informative program about being a stamp dealer. I think we all learned a lot. Thanks, Dale.

Encourage MPS members to join us for the Zoom meetings. If they are having trouble getting signed on, help them or ask them to contact one of the board members. Armin has agreed to be the contact on this.

Respectfully submitted  
Michael Keil

**Log into Zoom on Saturday,  
December 5th  
for Jessica Hellings' program,  
"Stamps of the  
South African Homelands".**

## New U.S. Issues for 2021:

The 2021 U.S. Stamp Program has been unveiled for the year. Others may be announced in the future. Here is a sampling of what to expect.



## Philatelic Happenings:

**E and D Auctions will hold their next Absentee Bid Auction. The auction closes on December 5th at 5:00pm. Those on the mailing list should have received the catalogue in the mail or contact Dale at 913-432-1806.**

**Saturday– December 5th  
29th Annual Fall Collectors Show  
Carthage Memorial Hall  
407 S. Garrison Ave. Hwy 571  
Carthage, MO**

*Attempted to contact organizer as to how many dealers and no response at this time.*

## The President's Corner:

Dear MPS Members -

As I write it is almost Thanksgiving. While 2020 has been challenging and difficult in many different ways, we still have so much to be thankful for as we head into winter. I am glad we have been able to keep meeting regularly as active stamp club. We have a long and rich history here in the Kansas City area, and I am grateful to all of you for your participation and involvement in the MPS. I encourage everyone to reach out to one another to keep our connections going strong. Our friendships are one of the most important parts of being in this group. If you haven't joined us for an online Zoom meeting and need help with technology, please reach out and we would be happy to help. Mike and I wish all of you the very best for Thanksgiving, for the other upcoming holidays, and into the new year!

Tomas

**The Midwest Philatelic Society Website and Blog is  
[www.midwestphilatelicsociety.com](http://www.midwestphilatelicsociety.com)  
Find previous newsletters, links to other stamp info and more on our website.**

## ***Nominating Committee Slate of Officers Announced:***

The following slate has been announced for next year's officers:

PRESIDENT— Tomas Griebing

1ST VICE PRESIDENT— Michael Miklovic

2ND VICE PRESIDENT—Rodger McReynolds

TREASURER—Armen Hovsepian

SECRETARY—Michael Keil

All have agreed to serve another term. Nominations from the floor in December's meeting can be made. Elections will be held at that time.

Thanks to the above members for being willing to serve during this difficult time.

## ***Philatelic Ramblings:***

The 2021 US stamp program has been announced. 2020 may be it for me in collecting new U.S. issues. Aside from the beautiful new additional ounce rate stamp, Brush Rabbit, nothing else really excites me. I do find the "Go for Broke, Japanese-American Soldiers of WWII", interesting from a history perspective and a nice design. I find the rest to be ugly or boring. So why keep collecting them. Especially when I consider what I spent last year to collect the single, plate block or a complete pane in many cases. I will save my rant about where are the new issues that should start coming out about the 250th anniversary of the signing of the Declaration of Independence. Keep in mind that the first stamp issued for the Bicentennial was in 1971. Five years before the 200th celebration. We are five years out next year, so what gives?



See for yourself the rest of the program by going to: [usps.com/news](https://usps.com/news)

JMc

## ***Membership:***

The board decided to suspend membership dues for the 2021 calendar year. We encourage all members to renew by filling out the membership form on page 4 of this newsletter. By filling it out we will be able to update records and to complete a project long talked about but never completed. That is a membership directory. By getting this completed, we will be able to connect with each other during this ongoing pandemic. If there is any information you do not want included, just indicate on the line provided what you want withheld, such as address or email address.

Please fill out and send in as soon as possible. The quicker we all return this form, the quicker we can complete and get out the membership directory. Don't forget if you can not receive the newsletter by email, indicate on the form and it will be mailed to you.

We hope this will make it easy for members to continue connecting and stay involved while we are unable to meet in person.

**MEMBERSHIP APPLICATION AND RENEWAL:**

YES ✓ I would like to JOIN OR CONTINUE my membership in Midwest Philatelic Society.

Copy and save this form as a pdf or jpg document and send to: info@armenstamp.com

Or mail to: Armen Hovsepian  
Treasurer  
P. O. Box 24222  
Overland Park, KS 66283

- 2021 dues (individual) .....\$10.00 .....\$ PAID
- 2021 dues (family) .....\$13.00 .....\$ PAID
- 2021 Donation to My MPS Club .....\$ .....\$ \_\_\_\_\_
- 2021 Donation to MPS Library.....\$ .....\$ \_\_\_\_\_

..... Total Remittance \$ \_\_\_\_\_

We are updating our records and will appreciate if you complete the following:

Name: \_\_\_\_\_

Address: \_\_\_\_\_ City: \_\_\_\_\_ ST: \_\_\_\_\_ Zip: \_\_\_\_\_

Phone: \_\_\_\_\_ E-mail: \_\_\_\_\_

My collecting interests: \_\_\_\_\_

ALL MEMBERS WILL BE INCLUDED IN THE NEW MEMBERSHIP DIRECTORY, IF YOU WANT TO BE INCLUDED BUT WANT SOME INFORMATION TO BE WITHHELD PLEASE INDICATE WHAT YOU DO NOT WANT TO BE INCLUDED:

I ONLY WANT MY NAME and COLLECTING INTERESTS TO BE INCLUDED IN MEMBERSHIP DIRECTORY \_\_\_\_\_

YOUR COPY OF THE NEWSLETTER WILL COME BY EMAIL UNLESS YOU WOULD PREFER IT TO COME BY TRADITIONAL MAIL.

I AM UNABLE TO RECEIVE EMAIL, SEND MY NEWSLETTER BY MAIL \_\_\_\_\_

## ***Topical Collecting and Preparing a 9-page Club Exhibit by Robert Burney***

Last month, Dale Smith gave a wonderful program on “Being a Stamp Dealer”. It was a truthful program given by an expert that covered everything a stamp collector would need to know if they decided to leap into stamp dealing. Some of the facts Dale presented reminded me why I abandoned the idea of pursuing stamp entrepreneurship after wrestling with a few small shows in the Midwest. That was over 10 years ago, but the memories of preparing material for shows, driving to and from shows, loading and unloading material at shows with poor attendance, and making little or no money to take home, remains vivid in my mind. Dale’s statement of “bigger shows, bigger money,” is certainly true.

During 2017, I presented my last series of workshops for Club Exhibiting. Prior to my workshops, Dale gave a different presentation at a club meeting in the library (remember those days?) explaining Topical collecting. I admit I’d been so involved with classic material from China the thought of Topical collecting completely escaped my mind. Like last month’s program, Dale’s earlier program set my hair on fire! I had too much to do with WSP exhibiting and training in those days, but I now had a renewed inspiration to begin small topical collections for future club exhibits – something to spend money on at shows while waiting for exhibiting judges to do their thing. All of those subjects I craved for decades began to unfold: Steam Locomotives, Trams and Trolleys, Viking Longboats and Artifacts -- the list goes on ...

Like many of my new stamp projects, material is purchased at shows, and after returning home finds a new resting place in a stock book, the catalog number, description and price paid entered into a ledger. If I’m lucky, and find the stock book I placed a particular subject into the last time I purchased, say Viking longboats, I put the new Viking longboat material into the same stock book. What chance do you think I would find the same stock book two times in a row? Every now and again, I look for an escape, away from a different hobby that needs a rest. My first task is to find and reorganize topical stamp subjects into reasonable layouts on the pages of (you guessed it) individual stock books. Sorting and inventory can be a love-hate relationship. I enjoy finding those little treasures purchased years ago, but sometimes I remember one was purchased that I can’t find ... where is it? How many times must I look through the same stuff until I find what I thought was missing? Maybe I don’t find them until days or weeks march along, or I’m on another project, and the missing stamps appear.

One of the messages I pushed during exhibiting workshops was the validity of modern stamps (those printed after 1960) as a foundation for topical subjects and exhibits on a small budget. I too am now past retirement age and already feeling a pinch when it comes to buying more classics. I keep asking for a larger allowance, but the banking institution in my home is controlled by a “pretty thing” that gives me a frightening look whenever money for hobbies is mentioned. Honest. So, please buy my stamps on our MPS Marketplace, or HipStamps (store name Viking Stamps).

While conducting workshops, I taught students to remember, the path to selecting a manageable exhibiting subject is to narrow scope. Topical collecting on the subject of trains is huge. I decided I liked steam powered locomotives more than diesel locomotives, and concentrated on engraved prints. That narrowed scope for a general collection of steam locomotives on stamps, but it was still too vast for an exhibit. I’ve always loved logging locomotives because of their small thumbprint, gear ratio, and an ability to navigate small track radiuses while meandering up the sides of mountains. Earlier years spent with model railroading concentrated on narrow-gauge logging rails, so I reduced scope toward narrow-gauge locomotives.

## Continued from page 5:

I spent a fair amount of time locating enough material for dedicated research and to format pages for a 9-page club exhibit. I'm still working on that exhibit and some others. When I need an escape and head toward my stamp collections, out comes narrow-gauge stamps for sugar plantations, diamond mines, mineral mining roads, logging, livestock, passenger, and on-and-on. I love research. Research drove me to exhibiting after 2006 and I never got tired of "the search". I remember "the good old days" of letters to archivists, some at national libraries and museums requesting copies of articles and pictures (those were largely ignored), long hours in local libraries and a few trips to others located far from home. The internet is the perfect tool, but you need to remember to separate the wheat from the chaff. There's much nonsense on the internet. Anyone can publish without an editor or publisher to check the validity of their yap, so researchers beware!

Tuesday, following our MPS Zoom meeting, my conscience kept reminding me to write an article for our newsletter and use narrow-gauge trains as a basis for the article with an example page ([see pg. 7](#)) that could be used for a personal collection, or a club exhibit (with a little polish). So here it is! The first album/exhibit page of many to come concerning this topic: Narrow-gauge Railways, concerning Namibia's industrial diamond fields. There are other narrow-gauge stamps from Namibia and they jumped out of that stock book and landed on a corner of one of my three desks ... on top of other stuff ... and I hope to research and design a page or two to cover their purpose in the locomotive world.

Enjoy your hobby. The fun never ends!

## MPS MARKETPLACE

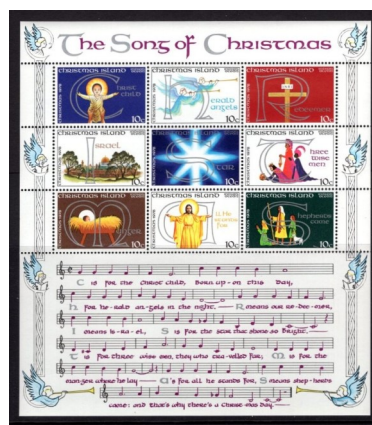
Now is a good time to check out the MPS marketplace and don't forget about the want list also. Remember you will need to contact the seller or the person listing the want directly. Their contact info is with the listing.

Good place to buy a present for a new recruit to the hobby, a fellow collector or just a present for yourself (those are the best)! Or maybe find material to start your own exhibit page(s) as Bob talked about in the preceding article. Lots of good buys listed, with all sorts of good subjects.

With the MPS market you don't pay sales tax or commission fee although you might have a shipping charge unless you meet that member somewhere to make the exchange.



MPS Lot #762



MPS Lot #708



MPS Lot #613

# Steel Wheels Along Iron Rails

## Narrow Gauge Railways

### Namibia's Industrial Diamond Field Railways

The history of rail transport in Namibia began with a small mining rail line at Cape Cross in 1895. The first major railway project started in 1897 when the German Colonial Authority built the 600 mm (1 ft. 11 5/8 in.) gauge Staatsbahn (State Railway) from Swakopmund to Windhoek. By 1902 the line was completed.

Parallel to this government initiative, the Otavi Mining and Railway Company (O.M.E.G.) was established. It built another 600 mm gauge line, the Otavibahn, from Swakopmund to Tsumeb via Otavi between 1903 and 1906, and a branch from Otavi to Grootfontein between 1907 and 1908.

The 600 mm gauge industrial railway of the diamond fields, between Kolmanskop and Bogenfels, was electrified from 1911, and became, to this day, the only electric railway in Namibia. As diamond mining moved further south, the



Issued 3 August 2017, Lithographed, Perf. 14½ x 14



Railcar No. 3 Kolmanskop



(1A0)'BO' Class, Benzol-Electric Locomotive



BO 'BO' Class, Benzol-Electric Locomotive C.D.M. No. 40



BO 'BO' Class, Electric Locomotive K.B.G

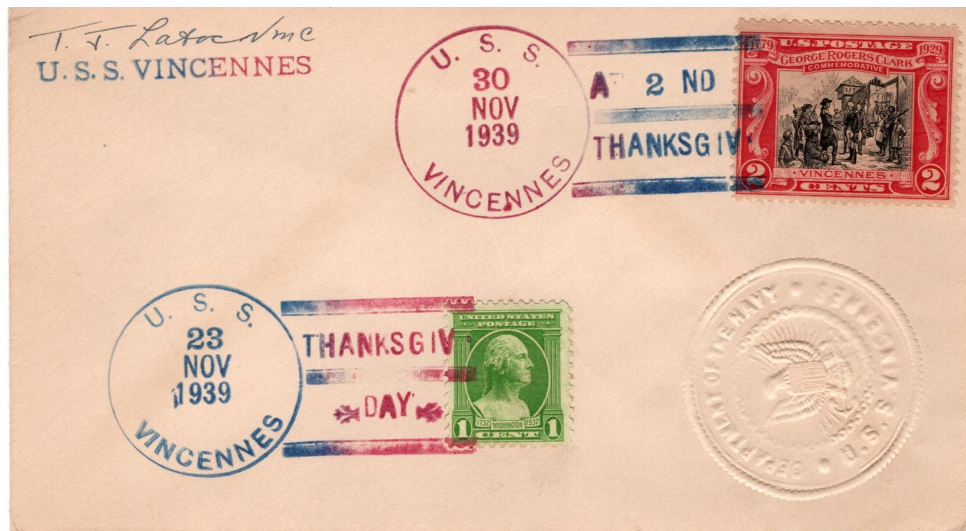
northern part of the line as far as Pomona was abandoned in 1931. Some of its materials were used for the extension of the railway towards Oranjemund.

The German colonial railway was taken over by the Railways of South Africa after World War I, and linked into the network of South Africa. After the independence of Namibia, TransNamib took control of the national rail network, which, by that time, had long since been converted to 3 ft 6 in (1,067 mm) gauge. The basic structure of the Namibian railway system dates from the time when the country was a colony of the German Empire known as German South West Africa.

## Thanksgiving in the Navy by Michael Keil

Happy Thanksgiving from the U. S. Navy

USS VINCENNES (CA-44) was commissioned on February 24, 1937. In early August, 1942, VINCENNES, along with USS QUINCY and USS SAN JACINTO was screening the landings at Guadalcanal. Early on the morning of August 9, the Japanese attacked the ships at what would become known as the Battle of Savo Island. VINCENNES was hit several times and internal communications were knocked out. The ship was then hit by two torpedoes and went dead in the water. Vincennes would be hit at least 85 times by 5-inch and 8-inch armor-piercing shells before sinking with the loss of 332 crewmen and officers.



Cover bears dual bicolor cancellations, November 23, 1939, type 3(A-BTT) and November 30, 1939 (Second Thanksgiving), type 3(A-TTB). The embossed seal of the VINCENNES is applied as a cachet and the cover is signed by T. J. Latoc, NMC.



USS PORTLAND (CL/CA-33) was launched in 1932 and was the first ship of the US Navy named after the city of Portland, Maine (not Oregon). PORTLAND saw extensive action during World War II, beginning with the Battle of Coral Sea. At the Battle of Guadalcanal the ship was torpedoed and suffered extensive damage. After 6 months of repairs, PORTLAND returned to action. Ultimately, Portland would

take part in virtually every major naval battle in the Pacific Theater in World War II to become one of the most decorated ships in US Naval history, earning 16 battle stars.

PORTLAND cover cancelled November 25, 1937. Type 3(AC-TBB) cancellation. Walter G. Crosby photo cachet.

Hope you enjoyed this month's newsletter. Thanks to Mike K., and Bob B. for their contributions. You can contribute too by emailing me for next month's issue. **Deadline for the January issue will be December 15th.** Happy stamping and enjoy this extra time with your collection. *Jim Mc*